

2022.9 中間決算報告
2022 Interim Report

Arisawa

CIC 昨日より今日、今日より明日

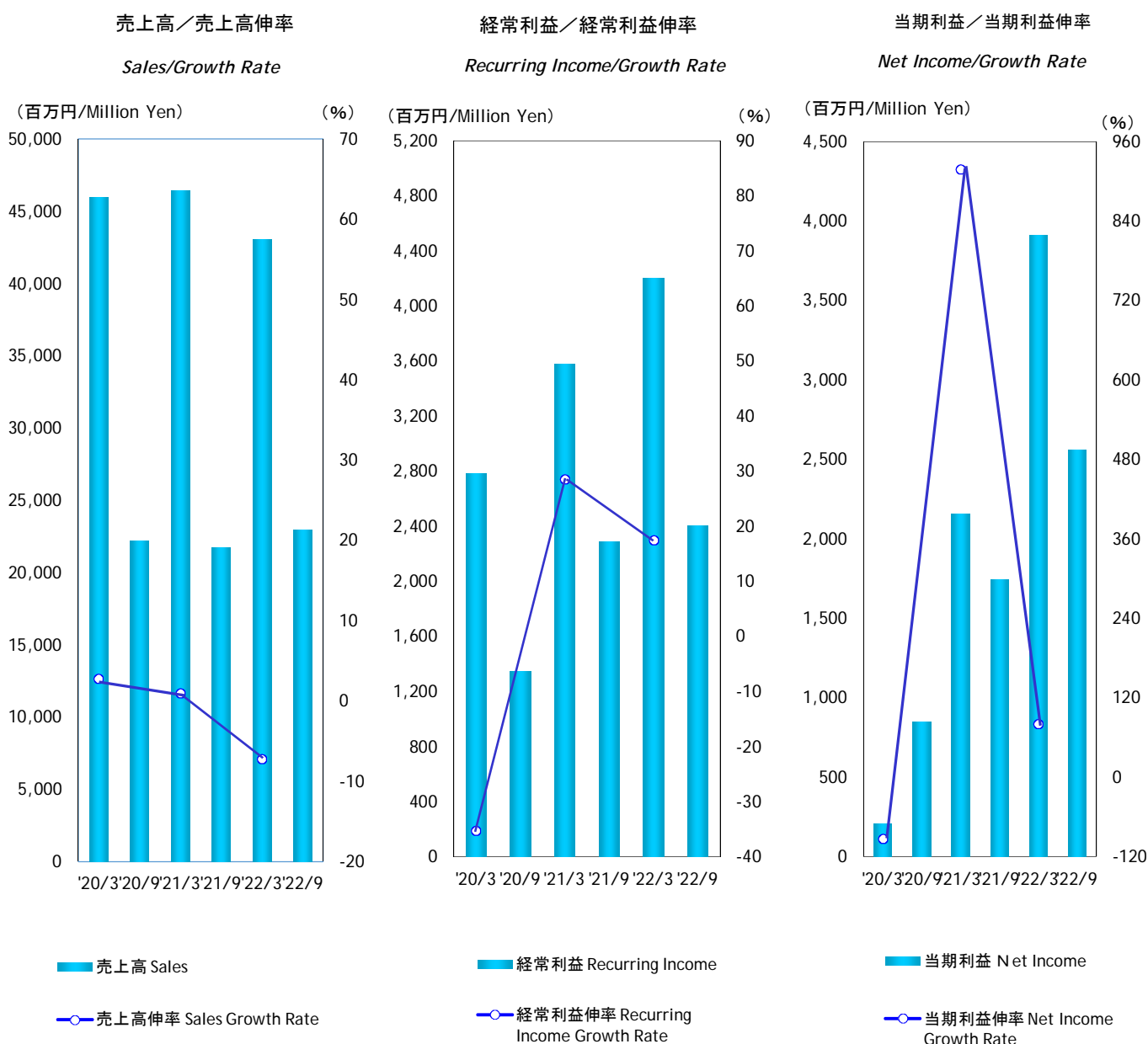


株式会社 有沢製作所

目次／CONTENTS

連結 業績／Consolidated Performance	1
セグメント別売上高明細／Consolidated Sales Breakdown by Segments	2
連結 資本／資本利益率／Consolidated Shareholders' Equity/Return on Shareholders' Equity	3
一株当り指標／Per Share Data	4
連結 設備投資／Consolidated Capital Expenditure	5
連結 貸借対照表／Consolidated Balance Sheet	6
連結 損益計算書／Consolidated Income Statement	7
連結 キャッシュフロー計算書／Consolidated Cash Flows Statement	8

連結業績 Consolidated Performance



決算期	Fiscal Year Ended	'20/3	'20/9	'21/3	'21/9	'22/3	'22/9
売上高(百万円)	Sales(Million Yen)	45,970	22,203	46,439	21,744	43,089	22,994
・売上高伸率(%)	Sales Growth Rate(%)	2.8		1.0		-7.2	
営業利益(百万円)	Operating Income(Million Yen)	2,762	1,375	3,118	2,048	3,320	1,861
・営業利益伸率(%)	Operating Profit Growth Rate(%)	-11.5		12.9		6.5	
経常利益(百万円)	Recurring Income(Million Yen)	2,783	1,347	3,578	2,287	4,204	2,408
・経常利益伸率(%)	Recurring Income Growth Rate(%)	-35.2		28.6		17.5	
当期利益(百万円)	Net Income(Million Yen)	212	853	2,160	1,745	3,911	2,563
・当期利益伸率(%)	Net Income Growth Rate(%)	-92.6		918.9		81.0	
売上総利益率(%)	Gross Profit(%)	16.9	16.7	17.1	21.6	20.1	20.4
販売費及一般管理費比率(%)	SG & A Ratio(%)	10.8	10.5	10.4	12.1	12.4	12.4

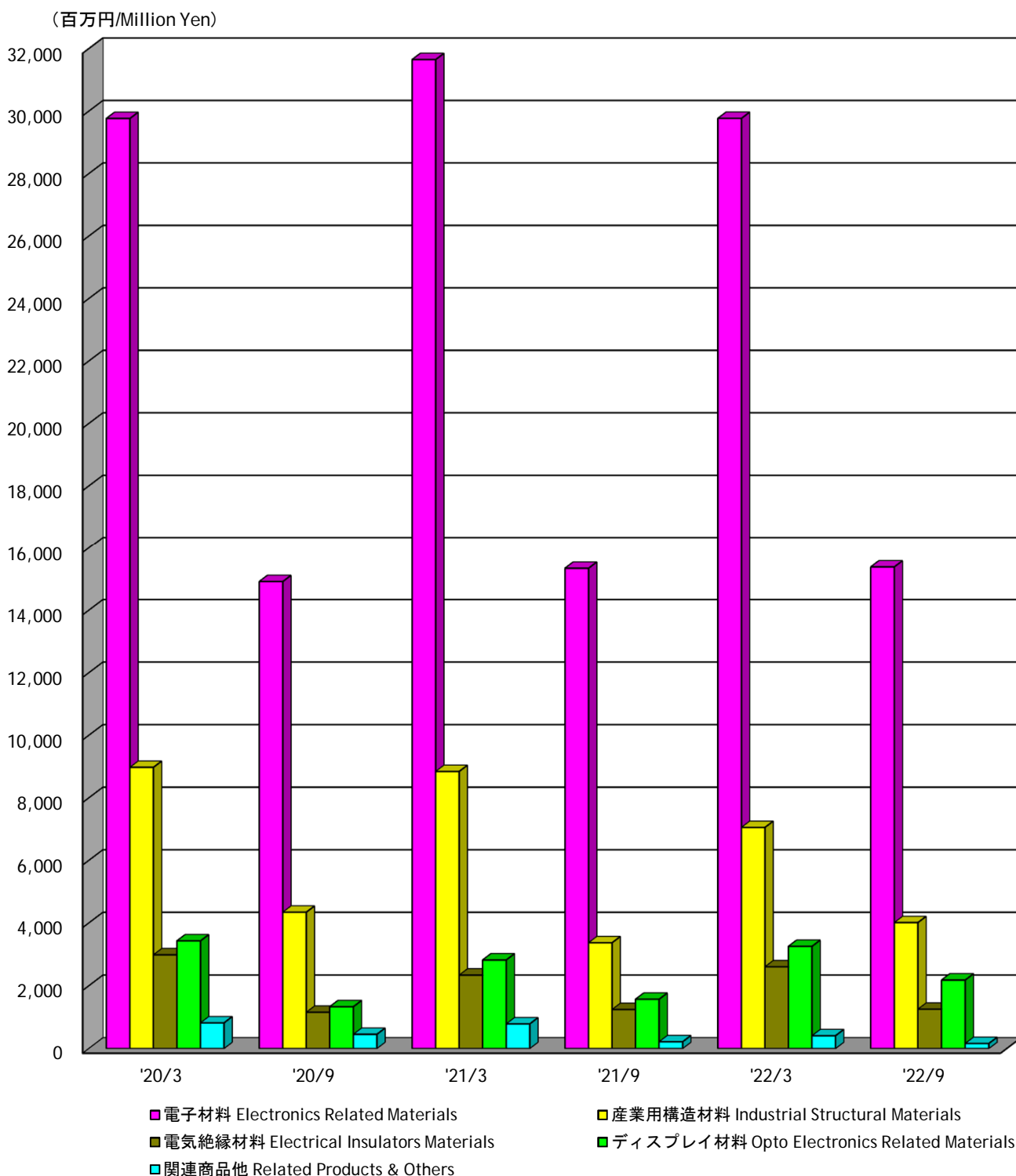
(注)記載金額は、百万円未満を切り捨てて表示してあります。

財務諸表等の一部改正に伴い、改正後の表示区分に組替えてあります。

Note: Amounts less than one million yen are omitted

The listed amounts are rearranged to reflect amended financial classifications pursuant to the amendment of a part of the Regulation concerning Terminology, Forms and Method of Preparation of Financial Statements, etc

連結 セグメント別売上高
Consolidated Sales Breakdown by Segments



決算期	Fiscal Year Ended	'20/3	'20/9	'21/3	'21/9	'22/3	'22/9
電子材料	Electronics Related Materials	29,765	14,915	31,650	15,342	29,768	15,384
産業用構造材料	Industrial Structural Materials	8,975	4,343	8,843	3,368	7,054	4,011
電気絶縁材料	Electrical Insulators Materials	2,984	1,157	2,340	1,245	2,604	1,255
ディスプレイ材料	Opto Electronics Related Materials	3,427	1,333	2,820	1,571	3,253	2,181
関連商品他	Related Products & Others	819	455	786	218	410	163
合計	Total	45,970	22,203	46,439	21,744	43,089	22,994

連結 資本／資本利益率

Consolidated Shareholders' Equity/Return on Shareholders' Equity

総資本／総資本回転率

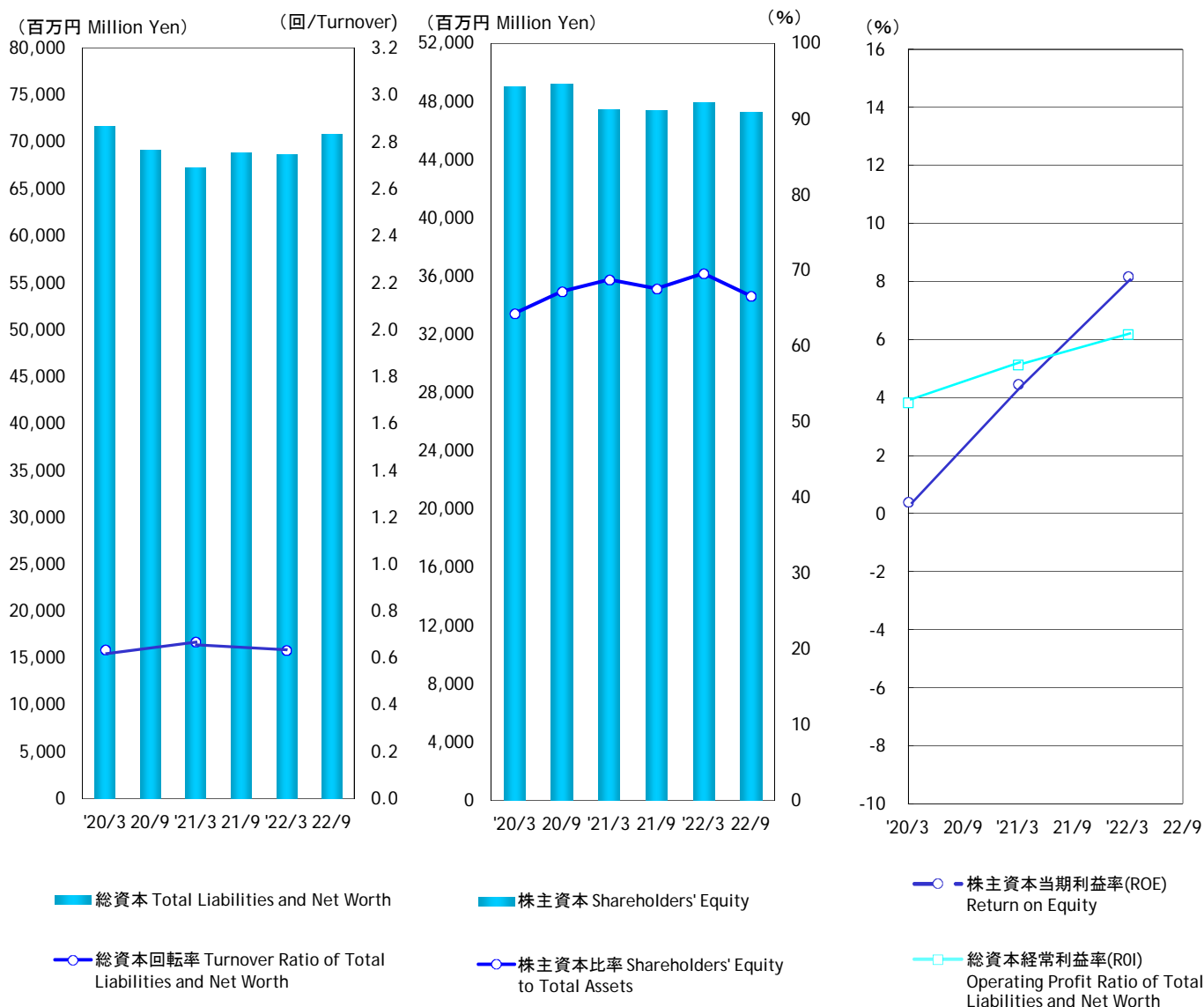
Total Liabilities and Net Worth/
Turnover Ratio of Total Liabilities
and Net Worth

株主資本／株主資本比率

Shareholders' Equity/
Shareholders' Equity to Total Assets

株主資本当期利益率／
総資本経常利益率

Return on Equity/Operating Profit Ratio
of Total Liabilities and Net Worth



決算期	Fiscal Year Ended	'20/3	20/9	'21/3	21/9	'22/3	22/9
総資本(百万円)	Total Liabilities and Net Worth(Million Yen)	71,709	69,153	67,257	68,828	68,689	70,866
▪ 総資本回転率(回)	Turnover Ratio of Total Liabilities and Net Worth	0.63		0.67		0.63	
▪ 総資本経常利益率(%)	Operating Profit Ratio of Total Liabilities and Net Worth(%)	3.8		5.1		6.2	
株主資本(百万円)	Shareholders' Equity(Million Yen)	49,018	49,174	47,444	47,407	47,965	47,308
▪ 株主資本比率(%)	Shareholders' Equity to Total Assets(%)	64.3	67.2	68.8	67.6	69.6	66.6
▪ 株主資本当期利益率(%)	Return on Equity(%)	0.4		4.5		8.2	

(注)総資本回転率=売上高／総資本(期中平均)

総資本経常利益率=経常利益／総資本(期中平均)×100

株主資本比率=株主資本(期末)／総資本／(期末)×100

株主資本当期利益率=当期利益／株主資本(期中平均)×100

財務諸表等の一部改正に伴い、改正後の表示区分に組替えてあります。

Note: Turnover Ratio of Total Liabilities and Net Worth = Net Sales/Total Liabilities and Net Worth(Mid-term Average)

Operating Profit Ratio of Total Liabilities and Net Worth = Ordinary Income/Total Liabilities and Net Worth (Mid-term Average)×100

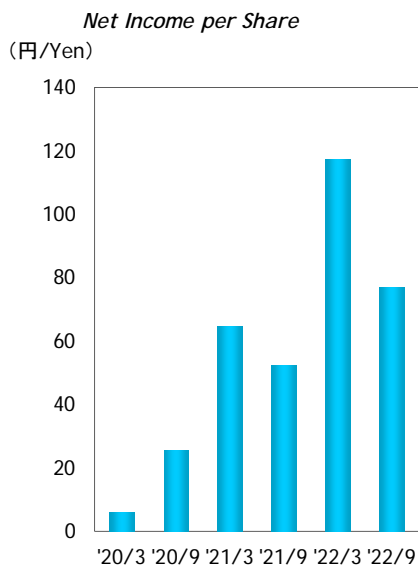
Shareholders' Equity to Total Assets=Shareholders' Equity(Term End)/Total Liabilities and Net Worth(Term End)×100

Return on Equity = Net Income/Shareholders' Equity(Mid-term Average)×100

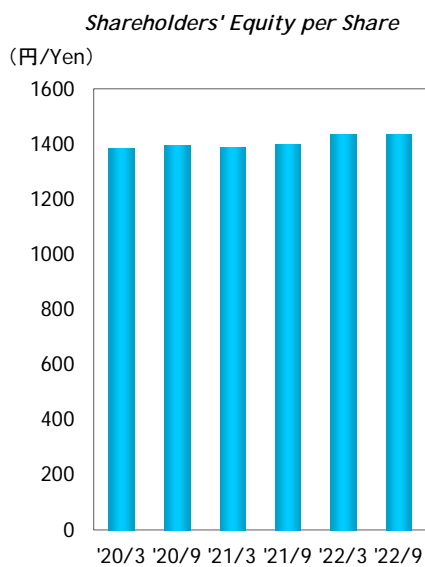
The listed amounts are rearranged to reflect amended financial classifications pursuant to the amendment of a part of the Regulation concerning Terminology, Forms and Method of Preparation of Financial Statements, etc

連結 一株当り指標
Consolidated Per Share Data

一株当り当期利益



一株当り株主資本

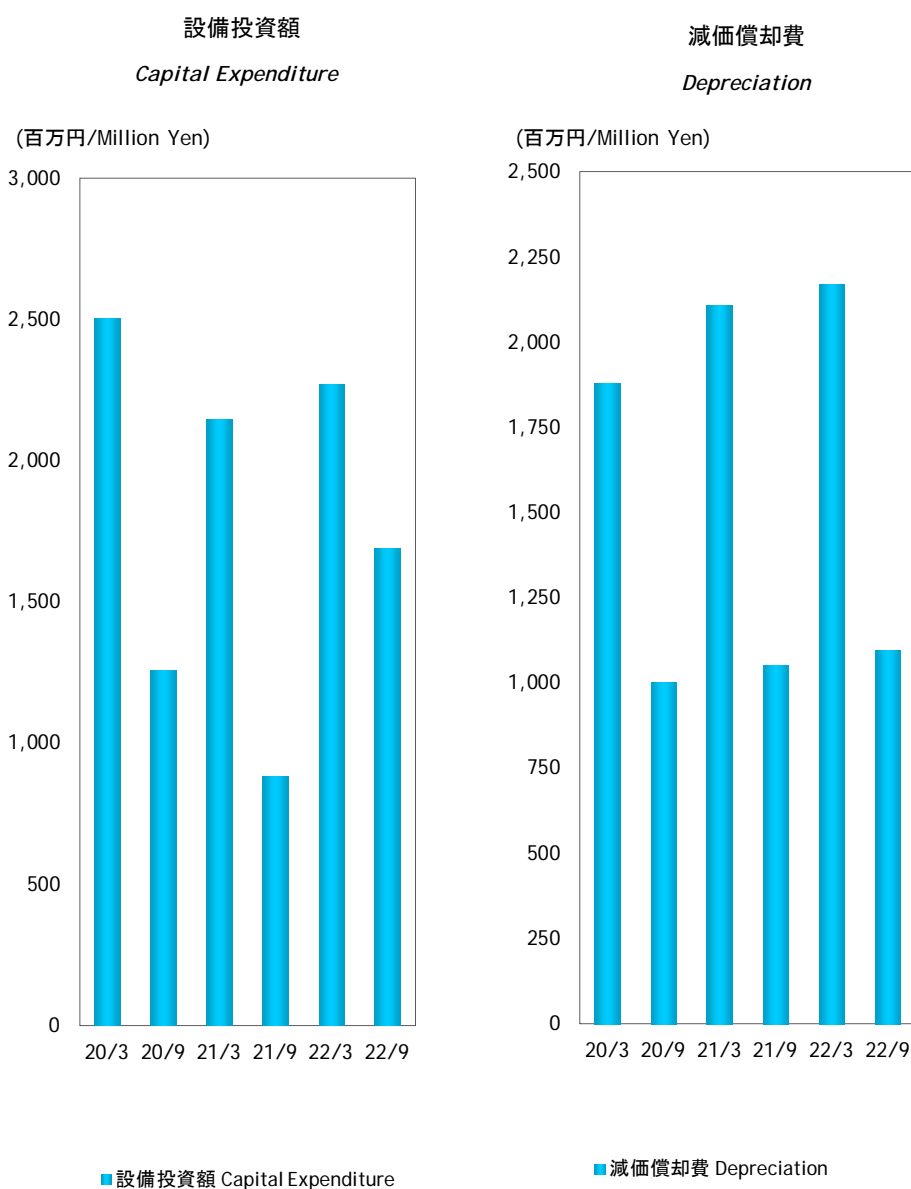


■ 一株当り当期利益 Net Income per Share

■ 一株当り株主資本 Shareholders' Equity per Share

決算期	Fiscal Year Ended	'20/3	'20/9	'21/3	'21/9	'22/3	'22/9
一株当り当期利益(円)	Net Income per Share(Yen)	6.14	25.63	64.94	52.34	117.40	77.23
一株当り株主資本(円)	Shareholders' Equity per Share(Yen)	1387.76	1396.37	1388.50	1397.98	1434.46	1437.10

連結 設備投資 Consolidated Capital Expenditure



決算期	Fiscal Year Ended	20/3	20/9	21/3	21/9	22/3	22/9
設備投資額(百万円)	Capital Expenditure(Million Yen)	2,506	1,258	2,145	882	2,269	1,690
減価償却費(百万円)	Depreciation(Million Yen)	1,879	1,002	2,108	1,052	2,171	1,097
棚卸資産回転数(日)	Inventory Turnover Period(Days)	69.9		68.3		83.6	
インタレストカバレッジ	Interest Coverage	76.5	-16.4	3.7	40.9	43.6	25.2

(注)棚卸資産回転数(日)=(期中平均在庫/売上高)X365

インタレストカバレッジ=営業キャッシュフロー/利払い

財務諸表等の一部改正に伴い、改正後の表示区分に組替えてあります。

Note: Inventory Turnover Period(Days)=(Average Inventory/Net Sales)X365

Interest Coverage=Cash flow from operation activities/Interest paid

The listed amounts are rearranged to reflect amended financial classifications pursuant to the amendment of a part of the Regulation concerning Terminology, Forms and Method of Preparation of Financial Statements, etc

連結 貸借対照表
Consolidated Balance Sheet

(百万円/Million Yen)

決算期	Fiscal Year Ended	'20/3	'20/9	'21/3	'21/9	'22/3	'22/9	
資産の部	流動資産	Current Assets	42,723	40,029	42,355	44,576	45,876	52,032
Assets	現金及び預金	Cash and deposits	14,714	11,040	13,216	13,161	17,342	20,819
	受取手形及び売掛金	Notes and accounts receivable	17,697	17,010	16,766	17,196	16,074	17,067
	有価証券	Securities	1,558	2,195	1,242	2,285	1,040	144
	棚卸資産	Inventories	8,279	9,275	9,098	11,265	10,638	12,864
	その他	Others	1,060	643	2,195	801	798	1,162
	貸倒引当金	Allowance for doubtful accounts	-585	-134	-162	-132	-16	-24
	固定資産	Fixed Assets	28,986	29,124	24,902	24,252	22,813	18,834
	(有形固定資産)	(Tangible fixed assets)	12,925	13,387	13,218	13,306	13,775	14,516
	建物及び構築物	Buildings and structures	5,873	5,314	6,145	6,110	6,062	6,039
	機械装置及び運搬具	Machinery, equipment and delivery equipment	3,962	3,921	3,873	3,561	3,438	4,041
	その他	Others	3,090	4,152	3,200	3,635	4,275	4,436
	(無形固定資産)	(Intangible Fixed Assets)	225	235	245	253	279	266
	(投資等)	(Investments and other assets)	15,836	15,502	11,439	10,693	8,759	4,052
	投資有価証券	Investment Securities	14,207	14,378	10,666	9,840	7,876	2,495
	その他	Others	1,767	1,276	788	868	933	1,607
	貸倒引当金	Allowance for doubtful debts	-138	-152	-15	-15	-50	-50
	資産合計	Total Assets	71,709	69,153	67,257	68,828	68,689	70,866
負債の部	流動負債	Current Liabilities	18,426	15,582	14,118	15,565	15,191	17,038
Liabilities	支払手形及び買掛金	Notes and accounts payable	6,916	6,843	6,657	7,319	5,638	7,353
	短期借入金	Short-term borrowings	4,866	4,742	3,606	3,906	3,562	2,838
	未払法人税等	Accrued income tax and others	3,428	469	278	820	1,088	1,207
	賞与引当金	Reserve for Bonuses	571	527	536	656	508	740
	その他	Others	2,645	3,001	3,041	2,864	4,395	4,900
	固定負債	Fixed Liabilities	4,265	4,397	5,695	5,856	5,533	6,520
	長期借入金	Long-term borrowings	2,568	2,775	3,762	4,009	3,845	5,010
	その他	Others	1,697	1,622	1,933	1,847	1,688	1,510
	負債合計	Total Liabilities	22,691	19,979	19,813	21,421	20,724	23,558
資本の部	資本金	Capital	7,594	7,601	7,624	7,630	7,644	7,718
Stockholders'	資本剰余金	Capital surplus	6,706	6,713	4,403	3,971	3,017	3,069
Equity	利益剰余金	Earned surplus	34,257	34,113	33,374	32,939	34,937	34,493
	為替換算調整勘定	Cumulative conversion adjustment	479	350	486	960	1,318	2,604
	自己株式	Treasury Stock	-3,205	-3,205	-1,159	-300	-300	-1,006
	新株予約権	Cost from Issue of New Bonds	166	167	194	183	149	89
	その他	Others	3,021	3,435	2,522	2,024	1,200	341
	資本合計	Total Stockholder's Equity	49,018	49,174	47,444	47,407	47,965	47,308
	負債、少数株主持分及び資本合計	Total Liabilities, Minority Interest and Stockholder's Equity	71,709	69,153	67,257	68,828	68,689	70,866

(注)財務諸表等の一部改正に伴い、改正後の表示区分に組替えてあります。

Note: The listed amounts are rearranged to reflect amended financial classifications pursuant to the amendment of a part of the Regulation concerning Terminology, Forms and Method of Preparation of Financial Statements, etc

(注)記載金額は、百万円未満を切り捨てて表示してあります。

Note: Amounts Less than one million yen are omitted

連結 損益計算書
Consolidated Income Statement

(百万円/Million Yen)

決算期	Fiscal Year Ended	'20/3	'20/9	'21/3	'21/9	'22/3	'22/9
売上高	Sales	45,970	22,203	46,439	21,744	43,089	22,994
売上原価	Sales cost	38,224	18,486	38,501	17,054	34,422	18,293
売上総利益	Gross profit on sales	7,746	3,717	7,938	4,690	8,667	4,701
販売費及び一般管理費	Selling and general administration expenses	4,984	2,342	4,820	2,642	5,347	2,840
営業利益	Operating Profit	2,762	1,375	3,118	2,048	3,320	1,861
営業外収益	Non-operating revenue	732	345	925	384	1,158	706
受取利息・配当金	Interest and Dividend Income	431	200	360	134	261	116
その他	Others	301	145	565	250	897	590
営業外費用	Non-operating expenses	711	373	465	145	274	159
支払利息・割引料	Interest paid	97	54	111	56	121	65
その他	Others	614	319	354	89	153	94
経常利益	Ordinary Profit	2,783	1,347	3,578	2,287	4,204	2,408
特別利益	Extraordinary profit	1,311	26	351	270	863	1,346
特別損失	Extraordinary Losses	972	6	413	30	102	73
税金等調整前中間(当期)純利益	Pretax interim (current) net profit	3,122	1,367	3,516	2,527	4,965	3,681
法人税、住民税及び事業税	Corporate income tax, local residence tax, and enterprise tax	3,699	412	457	714	1,157	1,116
法人税等調整額	Adjustment of corporate income tax, etc.	-1,020		461		-196	
少数株主利益(控除)	Profit attributable to minority interest (deduction)	231	102	438	68	93	2
中間(当期)純利益	Interim (current) net profit	212	853	2,160	1,745	3,911	2,563

(注)財務諸表等の一部改正に伴い、改正後の表示区分に組替えてあります。

Note: The listed amounts are rearranged to reflect amended financial classifications pursuant to the amendment of a part of the Regulation concerning Terminology, Forms and Method of Preparation of Financial Statements, etc

(注)記載金額は、百万円未満を切り捨てて表示してあります。

Note: Amounts Less than one million yen are omitted

連結 キャッシュ・フロー計算書
Consolidated Cash Flows Statement

(百万円/Million Yen)

決算期	Fiscal Year Ended	'20/9	'21/3	'21/9	'22/3	'22/9
営業活動によるキャッシュ・フロー	Cash flow from operation activities	-1,481	611	2,868	5,901	1,560
税金等調整前中間(当期)純利益	Pretax interim (current) net profit	1,367	3,517	2,527	4,966	3,682
減価償却費	Depreciation	1,002	2,108	1,052	2,171	1,097
持分法による投資利益	Investment profit on equity method	40	46	0	-15	-29
投資有価証券売却益	Profit on sale of investment securities	-	-10	-222	-777	-1,249
有形固定資産除却損	Loss on retirement of tangible fixed assets	1	6	7	18	0
投資有価証券評価損	Loss on appreciation of investment securities	-	-	-	-	-
為替差損(益)	(Profit) or loss on conversion	86	-229	-61	-398	-252
賞与引当金の増加額	Increase in reserve for bonuses	-43	-35	120	-28	232
貸倒引当金の(増)減額	(Increase) or decrease in provisions for doubtful accounts	14	36	-22	16	6
受取利息及び受取配当金	Interest and dividends received	-200	-360	-134	-261	-116
支払利息	Interest paid	54	111	56	121	65
売上債権の(増)減額	(Increase) or decrease in sales receivables	696	985	333	1,597	-197
たな卸資産の(増)減額	(Increase) or decrease in inventories	-992	-800	-2,234	-1,487	-1,813
仕入債務の(増)減額	(Increase) or decrease in purchase liabilities	-77	-284	496	-1,268	1,466
未払消費税等の(増)減額	(Increase) or decrease in accrued consumption tax, etc.	-222	-164	-18	109	-276
その他資産の(増)減額	(Increase) or decrease in other assets	-193	-160	71	80	-155
その他負債の(増)減額	(Increase) or decrease in other liabilities	32	353	-204	201	106
利息及び配当金の受取額	Interest and dividends received	215	411	149	295	177
利息の支払額	Interest paid	-90	-163	-70	-135	-62
法人税等の支払額	Corporate income tax, etc. paid	-3,234	-4,970	1,138	890	-956
その他	Other	63	213	-116	-194	-166
投資活動によるキャッシュ・フロー	Cash flow from investment activities	-1,155	1,567	1,889	2,869	4,214
定期預金の預入による支出	Payments for Received Time Deposits	-478	-1,771	-	-	-362
定期預金の払戻による収入	Revenue from refund of time deposits	200	200	1,460	1,674	132
有形固定資産の取得による支出	Expenditure on acquisition of tangible fixed assets	-788	-2,772	-883	-1,907	-1,955
有形固定資産の売却による収入	Revenue from sale of tangible fixed assets	-	0	1	11	0
投資有価証券の取得による支出	Expenditure on acquisition of investment securities	-497	-672	-103	-103	-332
投資有価証券の売却による収入	Revenue from sale of investment securities	458	5,611	1,456	3,339	6,780
貸付による支出	Expenditure on lending	-19	-29	-	-91	-20
貸付金の回収による収入	Revenue from collection of loans	5	41	5	87	4
その他	Other	-36	959	-47	-141	-33
財務活動によるキャッシュ・フロー	Cash flow from financing activities	-1,173	-5,703	-2,133	-4,043	-3,379
短期借入金による収入	Revenue from short-term borrowings	-141	-	127	-	-903
短期借入金の返済による支出	Expenditure on repayment of short-term borrowings	-	-1,282	-	-325	-
長期借入金による収入	Revenue from long-term borrowings	594	1,682	519	1,269	2,588
長期借入金の返済による支出	Expenditure on repayment of long-term borrowings	-384	-478	-476	-799	-1,305
株式の発行による収入	Proceeds from stocks issued	12	50	11	34	126
自己株式の取得による支出及び売却による収入の純額	Net expenditure on acquisition and proceeds from sale of treasury stock	0	0	-83	-83	-750
配当金の支払額	Dividends paid	-993	-995	-1,294	-1,463	-2,998
その他	Other	-261	-4,680	-937	-2,676	-137
現金及び現金同等物に係る換算差額	Conversion difference of cash and cash equivalents	-66	288	239	677	822
現金及び現金同等物の増(減)額	Increase (decrease) in cash and cash equivalents	-3,875	-3,238	2,864	5,405	3,217
現金及び現金同等物の期首残高	Cash and cash equivalents at the beginning of year	14,726	14,726	11,488	11,488	16,893
新規連結子会社の現金及び現金同等物の期首残高	Cash and cash equivalents at the beginning of year of newly consolidated subsidiaries	-	-	-	-	-
合併に伴う現金及び現金同等物の増(減)額	Cash of Removeing Consolidated Subsidiaries and Cash Equivalents at Mid-Term of Year	-	-	-	-	-
連結の範囲の変更に伴う現金及び現金同等物の増減額	Changes in Cash and Cash Equivalents by changing the scope of consolidation	-	-	-	-	-
現金及び現金同等物の中間期末(期末)残高	Cash and cash equivalents at the end of interim period(year)	10,851	11,488	14,352	16,893	20,110

(注)記載金額は、百万円未満を切り捨てて表示してあります。

Note: Amounts Less than one million yen are omitted