

2018年/3月期 決算報告
2017 Annual Report

Arisawa

CIC 昨日より今日、今日より明日

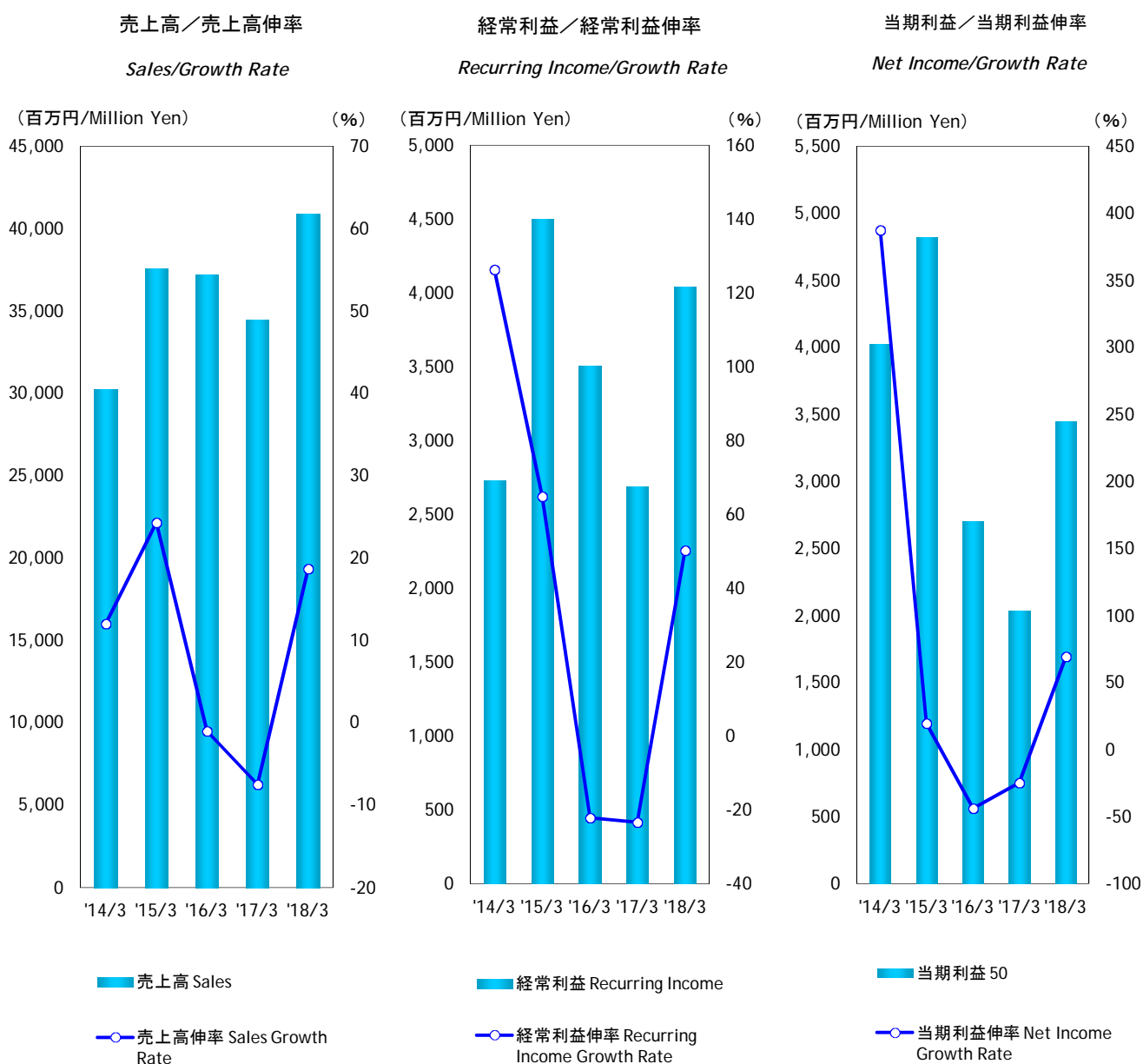


株式会社 有沢製作所

目次／CONTENTS

| | |
|--|---|
| 連結 業績／Consolidated Performance | 1 |
| セグメント別売上高明細／Consolidated Sales Breakdown by Segments | 2 |
| 連結 資本/資本利益率／Consolidated Shareholders' Equity/Return on Shareholders' Equity | 3 |
| 一株当り指標／Per Share Data | 4 |
| 連結 設備投資／Consolidated Capital Expenditure | 5 |
| 連結 貸借対照表／Consolidated Balance Sheet | 6 |
| 連結 損益計算書／Consolidated Income Statement | 7 |
| 連結 キャッシュフロー計算書／Consolidated Cash Flows Statement | 8 |

連結業績
Consolidated Performance



| 決算期 | Fiscal Year Ended | '14/3 | '15/3 | '16/3 | '17/3 | '18/3 |
|----------------|---------------------------------|--------|--------|--------|--------|--------|
| 売上高(百万円) | Sales(Million Yen) | 30,232 | 37,589 | 37,228 | 34,451 | 40,909 |
| ・売上高伸率(%) | Sales Growth Rate(%) | 12 | 24.3 | -1.0 | -7.5 | 18.7 |
| 営業利益(百万円) | Operating Income(Million Yen) | 986 | 2,935 | 2,957 | 1,790 | 3,627 |
| ・営業利益伸率(%) | Operating Profit Growth Rate(%) | | 197.5 | 0.7 | -39.5 | 102.6 |
| 経常利益(百万円) | Recurring Income(Million Yen) | 2,730 | 4,503 | 3,510 | 2,690 | 4,044 |
| ・経常利益伸率(%) | Recurring Income Growth Rate(%) | 126.3 | 64.9 | -22.1 | -23.4 | 50.3 |
| 当期利益(百万円) | Net Income(Million Yen) | 4,025 | 4,821 | 2,702 | 2,037 | 3,452 |
| ・当期利益伸率(%) | Net Income Growth Rate(%) | 387.6 | 19.8 | -43.9 | -24.6 | 69.5 |
| 売上総利益率(%) | Gross Profit(%) | 15.4 | 18.6 | 19.0 | 17.1 | 20.0 |
| 販売費及一般管理費比率(%) | SG & A Ratio(%) | 12.1 | 10.8 | 11.1 | 11.9 | 11.1 |

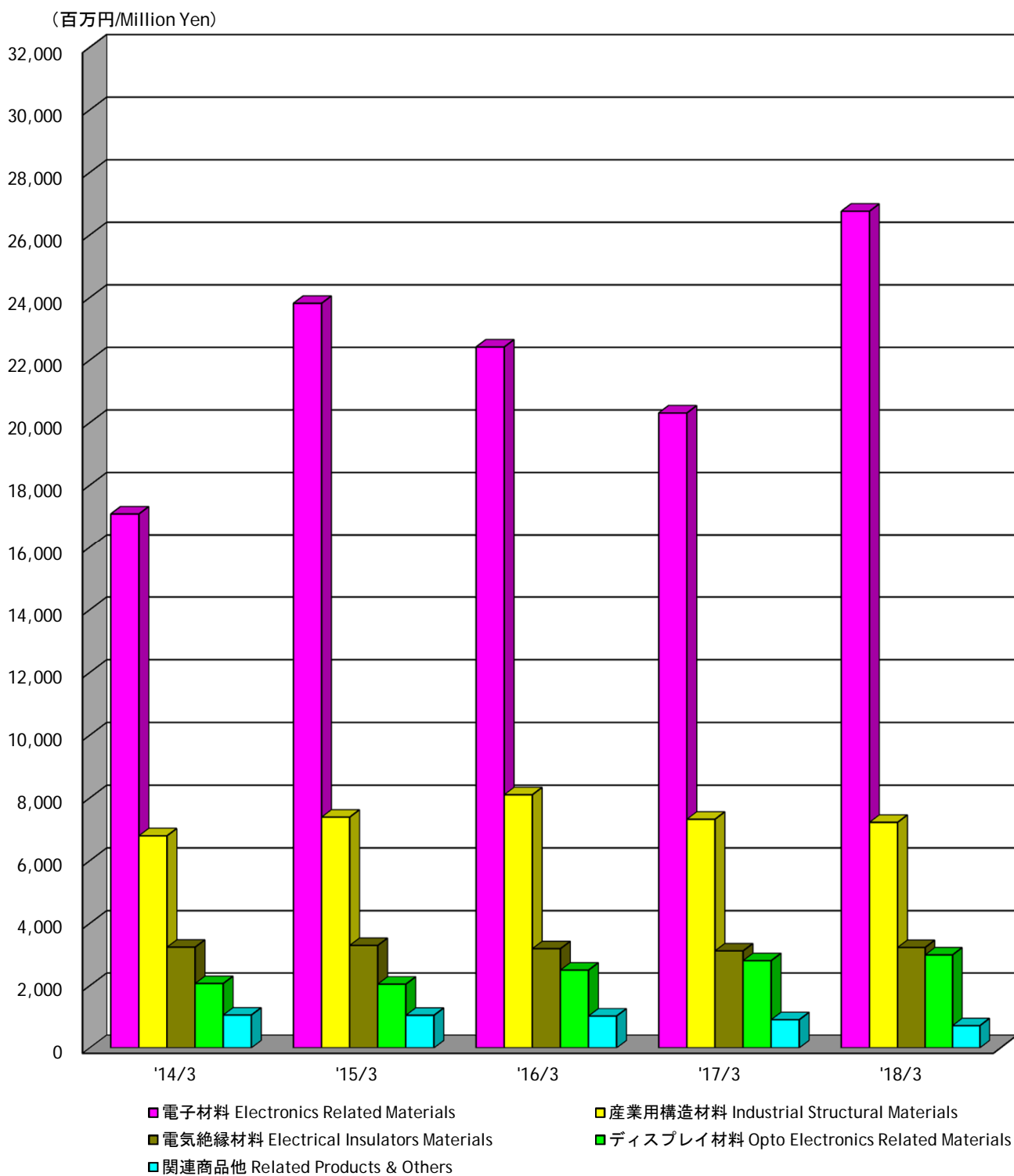
(注)記載金額は、百万円未満を切り捨てて表示してあります。

財務諸表等の一部改正に伴い、改正後の表示区分に組替えてあります。

Note: Amounts less than one million yen are omitted

The listed amounts are rearranged to reflect amended financial classifications pursuant to the amendment of a part of the Regulation concerning Terminology, Forms and Method of Preparation of Financial Statements, etc

連結 セグメント別売上高
Consolidated Sales Breakdown by Segments



| 決算期 | Fiscal Year Ended | '14/3 | '15/3 | '16/3 | '17/3 | '18/3 |
|----------|------------------------------------|--------|--------|--------|--------|--------|
| 電子材料 | Electronics Related Materials | 17,079 | 23,814 | 22,417 | 20,307 | 26,758 |
| 産業用構造材料 | Industrial Structural Materials | 6,792 | 7,386 | 8,100 | 7,319 | 7,221 |
| 電気絶縁材料 | Electrical Insulators Materials | 3,237 | 3,293 | 3,188 | 3,117 | 3,228 |
| ディスプレイ材料 | Opto Electronics Related Materials | 2,069 | 2,049 | 2,499 | 2,803 | 2,988 |
| 関連商品他 | Related Products & Others | 1,055 | 1,047 | 1,024 | 905 | 714 |
| 合計 | Total | 30,232 | 37,589 | 37,228 | 34,451 | 40,909 |

連結 資本／資本利益率

Consolidated Shareholders' Equity/Return on Shareholders' Equity

総資本／総資本回転率

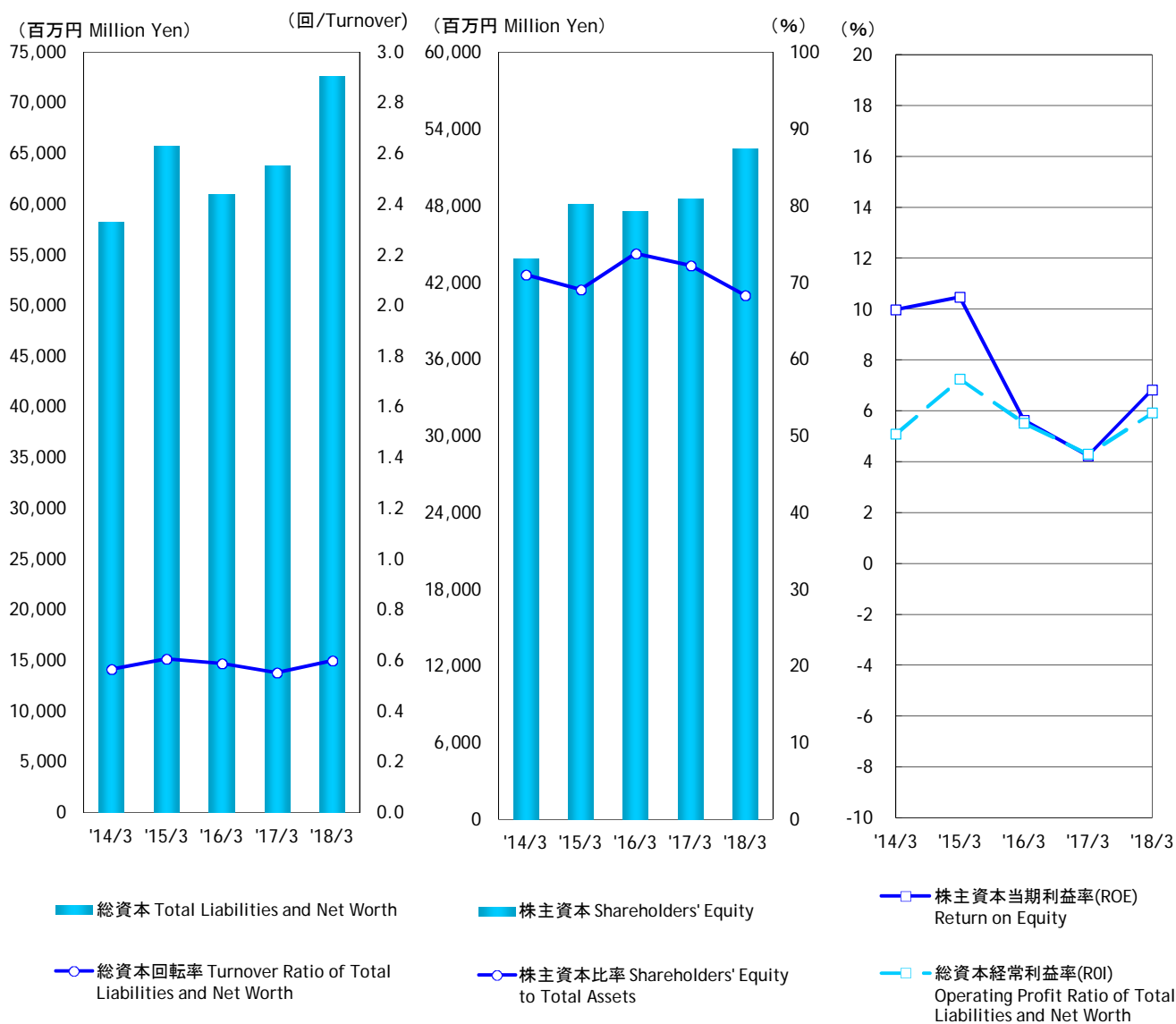
Total Liabilities and Net Worth/
Turnover Ratio of Total Liabilities
and Net Worth

株主資本／株主資本比率

Shareholders' Equity/
Shareholders' Equity to Total Assets

株主資本当期利益率／
総資本経常利益率

Return on Equity/Operating Profit Ratio
of Total Liabilities and Net Worth



| 決算期 | Fiscal Year Ended | '14/3 | '15/3 | '16/3 | '17/3 | '18/3 |
|----------------|--|--------|--------|--------|--------|--------|
| 総資本(百万円) | Total Liabilities and Net Worth(Million Yen) | 58,286 | 65,766 | 60,983 | 63,808 | 72,644 |
| ▪ 総資本回転率(回) | Turnover Ratio of Total Liabilities and Net Worth | 0.56 | 0.61 | 0.59 | 0.55 | 0.60 |
| ▪ 総資本経常利益率(%) | Operating Profit Ratio of Total Liabilities and Net Worth(%) | 5.1 | 7.3 | 5.5 | 4.3 | 5.9 |
| 株主資本(百万円) | Shareholders' Equity(Million Yen) | 43,848 | 48,147 | 47,602 | 48,551 | 52,492 |
| ▪ 株主資本比率(%) | Shareholders' Equity to Total Assets(%) | 71 | 69.1 | 73.8 | 72.2 | 68.3 |
| ▪ 株主資本当期利益率(%) | Return on Equity(%) | 10.0 | 10.5 | 5.6 | 4.2 | 6.8 |

(注)総資本回転率=売上高／総資本(期中平均)

総資本経常利益率=経常利益／総資本(期中平均)×100

株主資本比率=株主資本(期末)／総資本／(期末)×100

株主資本当期利益率=当期利益／株主資本(期中平均)×100

財務諸表等の一部改正に伴い、改正後の表示区分に組替えてあります。

Note: Turnover Ratio of Total Liabilities and Net Worth = Net Sales/Total Liabilities and Net Worth(Mid-term Average)

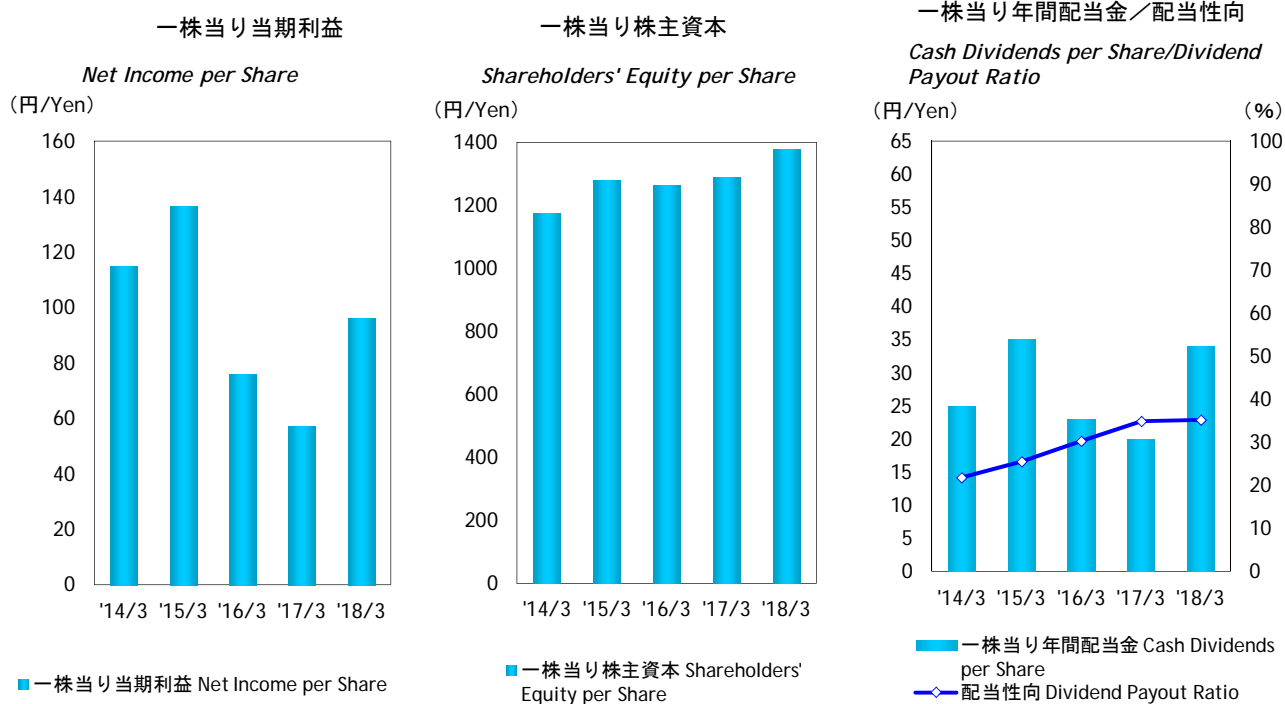
Operating Profit Ratio of Total Liabilities and Net Worth = Ordinary Income/Total Liabilities and Net Worth (Mid-term Average)×100

Shareholders' Equity to Total Assets=Shareholders' Equity(Term End)/Total Liabilities and Net Worth(Term End)×100

Return on Equity = Net Income/Shareholders' Equity(Mid-term Average)×100

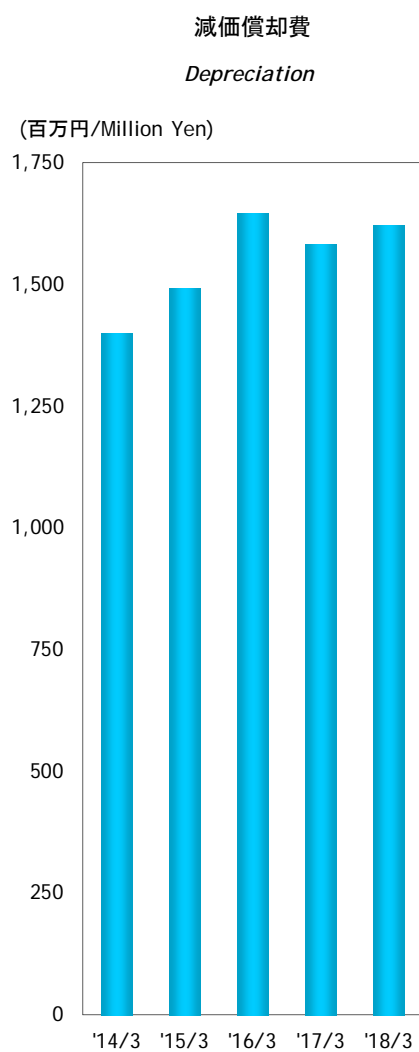
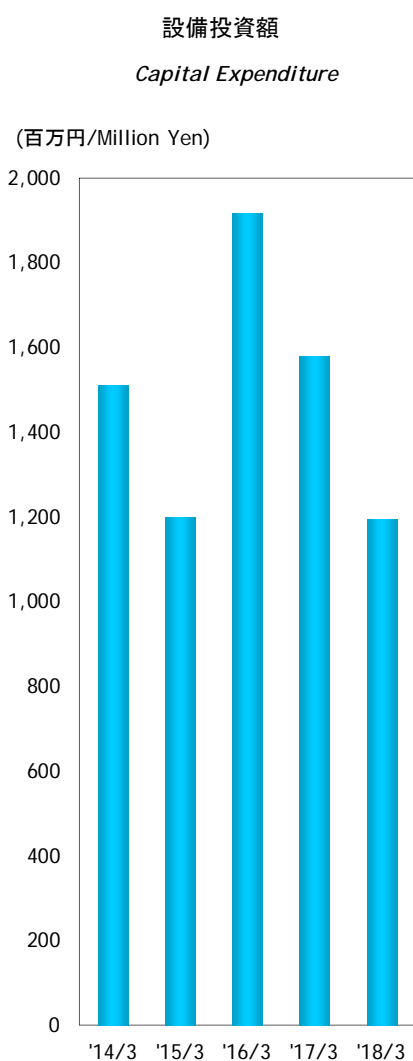
The listed amounts are rearranged to reflect amended financial classifications pursuant to the amendment of a part of the Regulation concerning Terminology, Forms and Method of Preparation of Financial Statements, etc

連結 一株当り指標
Consolidated Per Share Data



| 決算期 | Fiscal Year Ended | '14/3 | '15/3 | '16/3 | '17/3 | '18/3 |
|--------------|-------------------------------------|---------|---------|---------|---------|---------|
| 一株当り当期利益(円) | Net Income per Share(Yen) | 114.91 | 136.77 | 76.02 | 57.20 | 96.31 |
| 一株当り株主資本(円) | Shareholders' Equity per Share(Yen) | 1177.47 | 1280.69 | 1263.29 | 1290.93 | 1378.12 |
| 一株当り年間配当金(円) | Cash Dividends per Share(Yen) | 25 | 35 | 23 | 20 | 34 |
| 配当性向(%) | Dividend Payout Ratio(%) | 21.8 | 25.6 | 30.3 | 35.0 | 35.3 |

連結 設備投資 Consolidated Capital Expenditure



■ 設備投資額 Capital Expenditure

■ 減価償却費 Depreciation

| 決算期 | Fiscal Year Ended | '14/3 | '15/3 | '16/3 | '17/3 | '18/3 |
|-------------|----------------------------------|-------|-------|-------|-------|-------|
| 設備投資額(百万円) | Capital Expenditure(Million Yen) | 1,510 | 1,199 | 1,917 | 1,580 | 1,194 |
| 減価償却費(百万円) | Depreciation(Million Yen) | 1,399 | 1,492 | 1,646 | 1,583 | 1,621 |
| 棚卸資産回転数(日) | Inventory Turnover Period(Days) | 65.9 | 61.3 | 68.9 | 68.6 | 65.9 |
| インタレストカバレッジ | Interest Coverage | 30.1 | 20.3 | 46.6 | 70.5 | 28.5 |

(注)棚卸資産回転数(日)=(期中平均在庫/売上高)X365

財務諸表等の一部改正に伴い、改正後の表示区分に組替えてあります。

Note: Inventory Turnover Period(Days)=(Average Inventory/Net Sales)X365

The listed amounts are rearranged to reflect amended financial classifications pursuant to the amendment of a part of the Regulation concerning Terminology, Forms and Method of Preparation of Financial Statements, etc

連結 貸借対照表
Consolidated Balance Sheet

(百万円/Million Yen)

| 決算期 | Fiscal Year Ended | '14/3 | '15/3 | '16/3 | '17/3 | '18/3 | |
|----------------------|------------------------|--|---------------|---------------|---------------|---------------|---------------|
| 資産の部 | 流動資産 | Current Assets | 29,103 | 29,752 | 25,883 | 28,288 | 36,367 |
| Assets | 現金及び預金 | Cash and Time Deposits | 10,138 | 8,067 | 5,696 | 7,668 | 9,124 |
| | 受取手形及び売掛金 | Notes and Accounts Receivable, Trade | 10,814 | 13,653 | 11,607 | 12,619 | 15,947 |
| | 有価証券 | Securities | 1,255 | 36 | 525 | 798 | 1,180 |
| | 棚卸資産 | Inventories | 5,525 | 7,093 | 6,952 | 5,999 | 8,765 |
| | 繰延税金資産 | Deferred Tax Assets | 1,105 | 449 | 249 | 384 | 585 |
| | その他 | Other Current Assets | 481 | 629 | 1,092 | 947 | 1,328 |
| | 貸倒引当金 | Allowance for Doubtful Receivables | -215 | -175 | -238 | -127 | -562 |
| | 固定資産 | Fixed Assets | 29,183 | 36,014 | 35,100 | 35,520 | 36,277 |
| | (有形固定資産) | (Tangible Fixed Assets) | 11,419 | 11,210 | 11,281 | 11,065 | 11,636 |
| | 建物及び構築物 | Buildings and Structures | 5,987 | 5,829 | 5,711 | 5,817 | 5,777 |
| | 機械装置及び運搬具 | Machinery, Equipment and Automotive Equipment | 3,578 | 3,432 | 3,287 | 3,349 | 3,496 |
| | 工具器具及び備品 | Tools, Furnitures, Fixtures | 0 | 0 | 0 | 0 | 0 |
| | 土地 | Land | 1,506 | 1,450 | 1,450 | 1,450 | 1,836 |
| | 建設仮勘定 | Construction in Progress | 35 | 152 | 435 | 58 | 96 |
| | その他 | Other Fixed Assets | 313 | 347 | 398 | 391 | 431 |
| | (無形固定資産) | (Intangible Fixed Assets) | 125 | 96 | 68 | 65 | 419 |
| | (投資等) | (Investments and Other Assets) | 17,639 | 24,708 | 23,751 | 24,390 | 24,222 |
| | 投資有価証券 | Investments in Securities | 16,755 | 23,797 | 23,136 | 23,864 | 23,366 |
| | 長期貸付金 | Long-Term Loans | 363 | 546 | 211 | 211 | 219 |
| | 繰延税金資産 | Deferred Tax Assets | 410 | 153 | 132 | 123 | 201 |
| | その他 | Other Investments | 440 | 581 | 466 | 374 | 613 |
| | 貸倒引当金 | Allowance for Doubtful Receivables | -329 | -369 | -194 | -182 | -177 |
| | 資産合計 | Total Assets | 58,286 | 65,766 | 60,983 | 63,808 | 72,644 |
| 負債の部 | 流動負債 | Current Liabilities | 10,364 | 14,779 | 10,862 | 11,679 | 15,983 |
| Liabilities | 支払手形及び買掛金 | Notes and Accounts Payable, Trade | 4,768 | 6,235 | 5,245 | 5,168 | 6,794 |
| | 短期借入金 | Short-Term Loan Payables | 2,265 | 4,096 | 2,553 | 2,909 | 4,242 |
| | 未払法人税等 | Accrued Income Taxes | 203 | 1,200 | 98 | 363 | 931 |
| | 繰延税金負債 | Deferred Tax Liabilities | 9 | 2 | 7 | 25 | 0 |
| | 賞与引当金 | Reserve for Bonuses | 419 | 485 | 463 | 447 | 598 |
| | その他 | Other Current Liabilities | 2,700 | 2,761 | 2,496 | 2,767 | 3,418 |
| | 固定負債 | Long-Term Liabilities | 4,074 | 2,840 | 2,519 | 3,578 | 4,169 |
| | 長期借入金 | Long-Term Debt | 1,278 | 768 | 1,042 | 1,836 | 1,642 |
| | 繰延税金負債 | Deferred Tax Liabilities | 2,525 | 1,786 | 859 | 1,009 | 1,275 |
| | 退職給付引当金 | Severance and Retirement Benefits | 25 | 61 | 422 | 558 | 604 |
| | 役員退職慰労引当金 | Reserve for Officers' Retirement Bonuses | - | - | - | - | - |
| | 連結調整勘定 | Consolidated Adjustments | - | - | - | - | - |
| | その他 | Other Long-Term Liabilities | 246 | 225 | 196 | 175 | 648 |
| | 負債合計 | Total Liabilities | 14,438 | 17,619 | 13,381 | 15,257 | 20,152 |
| 資本の部 | 資本金 | Common Stock | 7,154 | 7,262 | 7,294 | 7,317 | 7,458 |
| Shareholders' Equity | 資本準備金 | Additional Paid-in Capital | 6,266 | 6,375 | 6,406 | 6,429 | 6,570 |
| | 利益剰余金 | Earned Surplus | 24,384 | 28,076 | 29,522 | 30,740 | 33,492 |
| | 自己株式 | Treasury Stock | -2 | -3 | -3 | -4 | -4 |
| | その他有価証券評価差額金 | Net Unrealized holding gains on Securities available for Sales | 2,980 | 2,446 | 647 | 943 | 1,214 |
| | 為替換算調整勘定 | Cumulative Translation Adjustments | 449 | 1,100 | 1,205 | 808 | 1,082 |
| | 新株発行費 | Cost from Issue of New Bonds | 146 | 84 | 117 | 143 | 128 |
| | 少数株主持分 | Minority Interest | 2,342 | 2,624 | 2,506 | 2,356 | 2,729 |
| | その他 | Others | 129 | 183 | -92 | -181 | -177 |
| | 資本合計 | Total Shareholders' Equity | 43,848 | 48,147 | 47,602 | 48,551 | 52,492 |
| | 負債、少数株主持分及び資本合計 | Total Liabilities, Minority Interest and Shareholders' Equity | 58,286 | 65,766 | 60,983 | 63,808 | 72,644 |

(注)財務諸表等の一部改正に伴い、改正後の表示区分に組替えてあります。

Note: The listed amounts are rearranged to reflect amended financial classifications pursuant to the amendment of a part of the Regulation concerning Terminology, Forms and Method of Preparation of Financial Statements, etc

(注)記載金額は、百万円未満を切り捨てて表示してあります。

Note: Amounts Less than one million yen are omitted

連結 損益計算書

Consolidated Income Statement

(百万円/Million Yen)

| 決算期 | Fiscal Year Ended | '14/3 | '15/3 | '16/3 | '17/3 | '18/3 |
|--------------|--|--------|--------|--------|--------|--------|
| 売上高 | Net Sales | 30,232 | 37,589 | 37,228 | 34,451 | 40,909 |
| 売上原価 | Cost of Sales | 25,587 | 30,600 | 30,147 | 28,557 | 32,730 |
| 売上総利益 | Gross Profit | 4,645 | 6,989 | 7,081 | 5,894 | 8,179 |
| 販売費及び一般管理費 | Selling, General and Administrative Expenses | 3,659 | 4,054 | 4,124 | 4,104 | 4,552 |
| 営業利益 | Operating Income | 986 | 2,935 | 2,957 | 1,790 | 3,627 |
| 営業外収益 | Non-Operating Income | 1,940 | 1,913 | 1,198 | 1,254 | 1,203 |
| 受取利息・配当金 | Interest and Dividend Income | 100 | 328 | 365 | 335 | 311 |
| その他 | Other Non-Operating Income | 1,840 | 1,585 | 833 | 919 | 892 |
| 営業外費用 | Non-Operating Expenses | 196 | 345 | 645 | 354 | 786 |
| 支払利息・割引料 | Interest Expenses | 92 | 113 | 98 | 48 | 76 |
| その他 | Other Non-Operating Expenses | 104 | 232 | 547 | 306 | 710 |
| 経常利益 | Ordinary Income | 2,730 | 4,503 | 3,510 | 2,690 | 4,044 |
| 特別利益 | Extraordinary Income | 1,630 | 3,056 | 882 | 153 | 852 |
| 特別損失 | Extraordinary Losses | 336 | 323 | 465 | 36 | 151 |
| 税金等調整前当期純利益 | Income Before Income Taxes | 4,024 | 7,236 | 3,927 | 2,807 | 4,745 |
| 法人税、住民税及び事業税 | Corporation Tax, Inhabitant Tax and Business Taxes | 401 | 1,552 | 697 | 654 | 1,199 |
| 法人税等調整額 | Provision for Income Taxes—Deferred | -755 | 483 | 300 | -62 | -204 |
| 少数株主利益 | Minority Stockholder Income | 353 | 380 | 228 | 178 | 298 |
| 当期利益 | Net Income | 4,025 | 4,821 | 2,702 | 2,037 | 3,452 |

(注)財務諸表等の一部改正に伴い、改正後の表示区分に組替えてあります。

Note: The listed amounts are rearranged to reflect amended financial classifications pursuant to the amendment of a part of

the Regulation concerning Terminology, Forms and Method of Preparation of Financial Statements, etc

(注)記載金額は、百万円未満を切り捨てて表示してあります。

Note: Amounts Less than one million yen are omitted

連結 キャッシュ・フロー計算書
Consolidated Cash Flows Statement

(百万円/Million Yen)

| 決算期 | Fiscal Year Ended | '14/3 | '15/3 | '16/3 | '17/3 | '18/3 |
|--------------------------|--|--------------|---------------|---------------|---------------|--------------|
| 営業活動によるキャッシュ・フロー | Cash Flows from Operating Activities | | | | | |
| 税金等調整前当期純利益 | Income before Income Taxes | 4,024 | 7,236 | 3,927 | 2,807 | 4,745 |
| 減価償却費 | Depreciation | 1,476 | 1,575 | 1,724 | 1,678 | 1,712 |
| 持分法による投資利益 | Equity in Earnings of Unconsolidated Subsidiaries and Affiliates | -1,163 | -745 | -444 | -400 | -464 |
| 投資有価証券売却損 | Loss on Sale of Investments in Securities | -1,569 | -2,976 | -756 | -9 | -703 |
| 固定資産売却益 | Gain on Sale of Properties | -4 | -3 | 1 | - | - |
| 有形固定資産除却損 | Loss on Disposal of Tangible Fixed Assets | 21 | 40 | 10 | 9 | 7 |
| 投資有価証券等評価損 | Loss on Write-Down of Investments in Securities | 135 | 112 | 10 | 1 | 64 |
| ゴルフ会員権償却損 | Golf-course-membership depreciation loss | 0 | 0 | - | - | - |
| 為替差損(益) | Exchange Loss(Gain) | -173 | -186 | 362 | 28 | -82 |
| 賞与引当金の増加額 | Increase in Reserve for Bonuses | 16 | 66 | -22 | -15 | 132 |
| 退職給与引当金の増加(減少)額 | Decrease in Reserve for Retirement Allowances | -66 | - | - | - | - |
| 貸倒引当金の増加額 | Increase in Allowance for Doubtful Receivables | -49 | 111 | 55 | -70 | 353 |
| 受取利息及び受取配当金 | Interest and Dividend Income | -172 | -441 | -478 | -429 | -403 |
| 支払利息 | Interest Expenses | 92 | 113 | 98 | 48 | 76 |
| 売上債権の(増)減額 | (Increase) Decrease in Receivables | -360 | -2,504 | 1,917 | -1,038 | -2,663 |
| たな卸資産の増(減)額 | (Increase) Decrease in Inventories | 82 | -1,480 | 71 | 886 | -2,152 |
| 仕入債務の増(減)額 | (Decrease) Increase in Purchase Liabilities | 0 | 1,361 | -929 | -33 | 1,376 |
| 未払消費税等の増(減)額 | (Decrease) Increase in Accrued Consumption Taxes | 52 | 15 | 51 | -86 | -36 |
| その他資産の(増)減額 | (Increase) Decrease in Other Assets | -19 | -164 | 435 | -287 | 66 |
| その他負債の増(減)額 | Increase in Other Liabilities | 127 | 129 | -187 | 56 | 278 |
| その他 | Other | 121 | 15 | 323 | -129 | 66 |
| 小計 | Subtotal | 2,571 | 2,274 | 6,168 | 3,017 | 2,372 |
| 利息及び配当金の受取額 | Interest and Dividend Received | 552 | 525 | 680 | 605 | 563 |
| 利息の支払額 | Interest Paid | -93 | -113 | -98 | -32 | -84 |
| その他 | Other | -237 | -392 | -2,202 | -170 | -669 |
| 合計 | TOTAL | 2,793 | 2,294 | 4,548 | 3,420 | 2,182 |
| 投資活動によるキャッシュ・フロー | Cash Flows from Investing Activities | | | | | |
| 定期預金の預入による支出 | Payments for Received Time Deposits | -667 | -3,826 | -428 | -289 | - |
| 定期預金の払戻による収入 | Proceeds from Purchase Time Deposits | 445 | 3,223 | 1,611 | 422 | 227 |
| 有形固定資産の取得による支出 | Payments for Purchase of Investments in Securities | -1,593 | -1,191 | -1,542 | -1,292 | -1,701 |
| 有形有形資産の売却による収入 | Proceeds from Sales of Property, Plant and Equipment | 5 | 3 | 12 | - | 6 |
| 投資有価証券の取得による支出 | Payments for Purchase of Investments in Securities | -1,371 | -10,409 | -7,571 | -1,667 | -1,419 |
| 投資有価証券の売却による収入 | Proceeds from Sales of Investments in Securities | 4,009 | 6,288 | 6,243 | 1,378 | 2,987 |
| 貸付による支出 | Payments for Loans | -27 | -270 | -139 | -211 | -172 |
| 貸付金の回収による収入 | Proceeds from Recovery of Loans | 11 | 11 | 58 | 8 | 157 |
| その他 | Other | -42 | 592 | -15 | -21 | -556 |
| 合計 | TOTAL | 770 | -5,579 | -1,771 | -1,672 | -471 |
| 財務活動によるキャッシュ・フロー | Cash Flows from Financing Activities | | | | | |
| 短期借入金の減少額 | Decrease in Short-Term Loans | 747 | 1,544 | -1,525 | 305 | 911 |
| 長期借入による収入 | Borrowings of Long-Term Debt | 1,119 | 571 | 1,169 | 2,350 | 690 |
| 長期借入金の返済による支出 | Repayments of Long-Term Borrowings | -1,590 | -1,314 | -1,517 | -1,311 | -914 |
| 株式の発行による収入 | Proceeds from Issue of Bonds | 55 | 165 | 49 | 35 | 226 |
| 自己株式の取得による支出及び売却による収入の純額 | Payments for Purchase of Treasury Stock and Proceeds from Sale | 0 | -1 | -1 | 0 | -1 |
| 配当金の支払額 | Cash Dividends | -279 | -876 | -1,240 | -817 | -712 |
| その他 | Other | -56 | -277 | -475 | -143 | -259 |
| 合計 | TOTAL | -4 | -188 | -3,540 | 419 | -59 |
| 現金及び現金同等物に係る換算差額 | Translation difference of Cash and Cash Equivalents | 316 | 102 | -357 | -54 | 262 |
| 現金及び現金同等物の増(減)額 | Changes in Cash and Cash Equivalents | 3,876 | -3,372 | -1,121 | 2,113 | 1,914 |
| 現金及び現金同等物の期首残高 | Cash and Cash Equivalents at Beginning of Year | 5,517 | 9,394 | 6,022 | 4,901 | 7,026 |
| 新規連結子会社の現金及び現金同等物の期首残高 | Cash of New Consolidated Subsidiaries and Cash and Cash Equivalents at Beginning of Year | - | - | - | - | - |
| 合併に伴う現金及び現金同等物の増(減)額 | Changes in Cash and Cash Equivalents by Merge | - | - | - | 13 | - |
| 連結の範囲の変更に伴う現金及び現金同等物の増減額 | Changes in Cash and Cash Equivalents by changing the scope of consolidation | - | - | - | - | -110 |
| 現金及び現金同等物の期末残高 | Cash and Cash Equivalents at End of Year | 9,394 | 6,022 | 4,901 | 7,026 | 8,830 |

(注)記載金額は、百万円未満を切り捨てて表示してあります。

Note: Amounts Less than one million yen are omitted